

WEBERFLOOR 270 (WB 270)

SELF-SMOOTHING THIN TOPPING SCREED

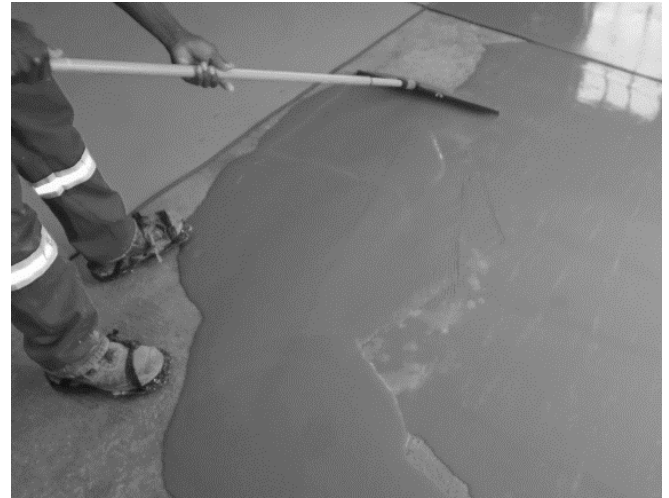
- Rapid setting
- Smooth and Hard finish
- Flowable



About this product

Weberfloor 270 Self-Leveling Screed is an advanced, high strength polymer based underlayment developed for residential, commercial applications. This product is specially formulated to provide a rapid setting and smooth underlayment suitable for correcting uneven sub-floors prior to the installation of floor coverings.

Its high strength formulation is suitable to repair a range of sub-floor types including sand and cement screeds and concrete floors. Once applied, the floor is able receive light foot traffic after 1 - 2 hours. Floor coverings – such as carpet, tiles, vinyl and engineered wood – can typically be installed 24 hours after application.



Features and Benefits

- Residential and Commercial Grade
- 27MPa
- Excellent Workability
- Medium Load-bearing

Uses

For leveling solid bonded substrates:

- Concrete
- Sand/cement screeds
- Anhydrite screeds (calcium Sulphate based)

Suitable for covering with:

- Vinyl and Linoleum
- Carpet
- Laminate flooring
- Parquet flooring
- Tiles

Constraints:

- Not to be left without a suitable floor covering
- Not to be used where some movement is expected

Technical Data

Application temperature	10°C – 30°C
Minimum Substrate strength	1N/mm ²
Minimum Thickness	3mm
Maximum thickness	20mm
Water demand	4.6 liters /20 kg
Compressive strength	> 27 N/mm ² after 28 days
Flexural strength	>7 N/mm ² after 28 days
Shrinkage (28 days)	< 0.05%
Weber flow rate	230-250mm
Approx. material consumption	1.7kg/m ² /mm
Hardening time (before foot traffic)	1-2 hours
Hardening time (before final covering)	24 hours
Pot life	30 minutes

*Data provided based 23°C and 50% Relative humidity

WEBERFLOOR 270

Preparation

The prepared surface must have an average "surface tensile adhesion strength" greater than 1N/mm². Moreover, it should have CSP (concrete surface profile) of 3 to 4.

New concrete substrates should be at least cured for 28 days old and structurally stable (residual moisture <4%).

Concrete must be crack free. Thus, any crack must be repaired prior to application.

All surfaces should be clean, dry, and free from grease, laitance, oil, dust, paint and any other substance that may prevent or reduce adhesion.

Remove all weak, loose, smooth or broken pieces of concrete, until reaching a sound rough concrete. This can be achieved primarily by shot-blasting otherwise by medium scarifying or grinding.

Then, the substrate must be vacuumed and primed with **Weberfloor Primer**.

Weber does not warrant any defect due to concrete substrate movement.

Priming

Weberfloor Primer is supplied ready for use. Do not add water and must be brushed into the substrate using a mohair brush. Primer puddles should be avoided.

Weberfloor Primer must be applied on one or two coats depending on the substrate. Dry and porous substrates may require additional coats versus High dense concrete. Refer to instructions on datasheet.

Priming improves the screed's adhesion to the substrate and prevents the formation of air bubbles and dewatering of the screed. Priming also improves the flow properties of the screed. Dry and very porous substrates (cast-in-situ concrete floors) may need to be treated twice. If the screed is applied in more than one layer, each layer must be primed

Mixing

Gradually mix 20kg of **Weberfloor 270** into 4.6 liters of clean cool water.

Measure and add the proper amount of water for each bag into a mixing container.

Using a paddle type mixer on a slow speed drill (speed below 500rpm), place the paddle in the mixing water and start pouring slowly **weberfloor 270** powder.

Mix for a minimum of 2 minutes until a homogeneous lumps free mix is obtained.

Scrape the sides of the mixing container and remix for 1 minute.

The mixed **weberfloor 270** should be applied to the substrate within 5 to 10 minutes of mixing. This time is dependent on ambient temperatures which will affect setting time (warmer temperatures may accelerate drying time, while cooler temperatures may slow drying times).

Application

Pour the mixed **weberfloor 270** onto the prepared surfaces. Then immediately spreading it out with a notched rake suitable for the required thickness. Gently push and pull the product to aid in levelling and smoothing the surface. Do not over trowel the product. The properties of the formulation allow for excellent flow and workability for ease of application.

The product has excellent self-healing properties over damaged and uneven floor areas. Do not walk in the wet material unless wearing spiked shoes or boots. Roll the wet product with a spiked roller gently and slowly, but thoroughly to remove air bubbles and improve levelling, before the setting process advances too much.

During and after the application, the product must be protected from wind currents. If the temperature is below 23°C, allow longer curing time of the material before walking on it. Ideal application temperature is between 10° and 25°C.

Note: Floor coverings can typically be installed the following day, 24 hours after the application of the levelling screed. When left uncovered, the new screed may become contaminated by building activities, and it is recommended that once cured, that it is protected by covering with a suitable material. It is advisable to test moisture content of self-levelling screed before floor covering is laid, as some soft glues used in application of floor coverings are very moisture sensitive.

It is advisable to test moisture content of the screed before floor covering is laid (4.5% maximum moisture content).

Drying time

The screed can receive foot traffic after a drying time of 1 - 2 hours at an ambient temperature of +23°C. If necessary, the surface can be ground after 2 days following application.

Floor covering can be installed after 24 hours depending on layer thickness and drying conditions. High humidity of the substrate and poor drying conditions prolong the setting time.

Overlay

Weberfloor 270 is compatible with most common floor finishes and adhesives.

It should not be painted or used without a floor finish.

Packaging

Weberfloor 270 is packed in 20kg polythene-lined paper bags.

Storage and shelf life

When stored, unopened in a dry place at temperatures below 30°C, shelf life is 12 months from date of manufacture.

Safety Instructions

Contains cement, which is alkaline when wet and can cause skin irritation. Use eye protection and gloves and avoid prolonged skin contact. Avoid inhalation of dust. Wash skin contamination away with warm soapy water. Remove splashes to the eyes by prolonged irrigation and consult a doctor. Do not ingest. MSDS sheets available on request.

General

Weberfloor 270 screed should not be applied to exterior surfaces and is not recommended for external use.

NOTE: only suitable for underlayment applications. If a durable floor covering is not going to be applied over the screed, then a protective coating must be applied over the cured screed. It is of absolute importance that the success of the installation depends on correct floor preparation, including floor level surveys, correct and adequate priming; product mixing and application. All the data given was

obtained at a temperature of 23°C and 50% relative air humidity. Bear in mind that hardening or drying is accelerated or delayed under other climatic conditions.

Manufacturer Warranty

All **Weber** products are manufactured to **Weber's** exacting standards, which comply with Quality System Standards ISO 9001:2015 and ISO 14001:2015.

Guarantee

We agree that **Weber** products meet the product specification and will be free from any defect. Any guarantee with regard to the performance of **Weber** products will be subject to the professional and practical application of **Weber** products in accordance with our instructions and specifications. However, we have no influence over specific site conditions and therefore, if in doubt, the user should first carry out sufficient tests to ensure that the product is suitable. In special cases, obtain advice. Should our product prove defective, we undertake to replace the defective material. This guarantee will fall away in the event of **Weber** products being contaminated by the addition of sand, cement or substance other than recommended by us. **Weber** will not be liable for any injury, loss or damage (direct or consequential) relating to the use (or inability to use) our products.

Green Building council requirements

Weberfloor 270 contains no Volatile Organic Compounds and is therefore totally compliant with all relevant requirements classified as 'green'. The VOC declaration and Material safety datasheet is available upon request.

Technical services

Weber has a team of experienced advisors available to provide technical support. Technical helpline: **08600 WEBER (93237)** or visit www.za.weber