

# Company Profile

## ◉ TILING CONSIDERATIONS

## ◉ PRODUCT PORTFOLIO

## ◉ VALUE SERVICES

## ◉ CONTACT

Weber, the world-leading industrial mortars manufacturer, forms part of the Saint-Gobain Construction Products Group, a world leader in habitat and construction offering a wide range of solutions from adhesives, flooring, waterproofing and plastering renders.

In South Africa, Weber-Tylon has 4 production facilities in:

- Alrode, Gauteng
- New Germany, KwaZulu-Natal
- Epping, Cape Town
- Markman Industrial, Port Elizabeth

Saint-Gobain Africa has a number of brands which support the development of African cities by offering solutions adapted to the needs of the local markets. We provide innovative materials for homes, hotels, schools, offices, hospitals, industrial areas and even airports, bringing you comfortable spaces wherever you are.

Our products can be found across the African continent:

- Southern Africa: Angola, Botswana, Lesotho, Malawi, Mozambique, Namibia, South Africa, Swaziland, Zambia & Zimbabwe
- East Africa: Ethiopia, Kenya, Tanzania
- West Africa: Ghana, Ivory Coast, Nigeria

Additional services include a fully functional R&D lab facility, ISO9001 quality assurance, sales & specification assistance, onsite support & product guarantees.

**At Weber, we believe that what matters most in the construction industry is caring about people and their environment.**

# WEBER PRODUCT SOLUTIONS CONSIDERATIONS

1

There are many considerations when choosing tiles as a final finish to your creative vision, and we are here to help. The installation of these tiles is just as important as the design.

## WHAT TYPE OF TILE WILL I SELECT TO COMPLETE MY VISION?

Design, colours, shade and patterns



Quick Tips

### TILE SELECTION

- Whilst ceramic tiles are the more economical solution and easier to cut and shape manually, they are not ideal for outdoor applications
- Porcelain tiles perform better when it comes to water and stain resistance and are generally more durable in nature
- Weber offers a wide range of adhesives & grouting solutions to match your tile selection

Size & format from mosaic, small, large or ultra-tile types



Body type including ceramic, hard-body, porcelain, slate and marble



## WHERE WILL WE BE TILING? INDOORS, OUTDOORS, WET AREA?

Many people don't think about the installation methods, but consideration of adhesive type or additives is imperative.

### Indoor areas

- **Indoor areas:** whilst this is a fairly straight forward application, it still requires the consideration of expansion/movement joints



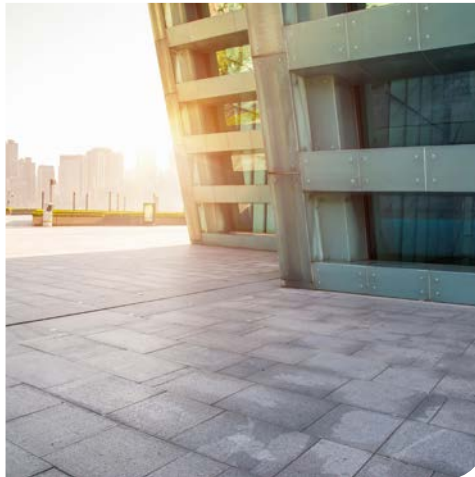
Quick  
Tips

#### TILE INSTALLATION

- Weber adhesive solutions can be applied 3-20mm thick
- Depending on the evenness/method of application, consumption can range from:
  - 6m<sup>2</sup> per 20kg using a 6mm notched trowel for wall tiling
  - 4m<sup>2</sup> per 20kg using a 10mm notch trowel for floor tiling

### Outdoor areas

- **Outdoor areas:** tips for outdoor tiling
  - Choose a tile that can withstand the elements (max porosity of 3%)
  - Incorporate movement joints every 2-3 metres
  - Allow for extra planning on external applications
  - Protect the installation during the setting process
  - Use quality tile installation products that can withstand the external conditions



### Wet areas

- **Wet areas:** tips to consider for wet area tiling
  - Drains & corners to be protected using waterproofing membranes
  - Allow for "falls" where the water can be released or directed to drains or gutters
  - Always replace water with a bonding agent in wet area applications for improved water resistance & flexibility
  - Back buttering the tile ensures a good fix and adhesion to the surface area



# ARE THERE SPECIFIC OR SPECIAL CONSIDERATIONS IN THIS APPLICATION?

# 3



## TIME

- We have solutions that can fix your tiles in 6, 12 or 24 hours
- Tiling onto another tile surface to save time? There's an adhesive for that, in the Weber range!



## SURFACE PREPARATION FOR TILING

- Preparation is key in any professional application – using a cementitious slurry (Weber Plaskey & Key-It) assists in providing exceptional bonding between the surface and adhesive bed to ensure a secure bond to the floor or wall
- Preparation by using a slurry also assists in water resistant areas/applications
- Another consideration for surface preparation when tiling is using a self-levelling screed system. Did you know that if you apply a self-levelling screed you will require less adhesive due to the evenness of the floor surface?



## PREPARATION

- A slurry coat improves adhesion to a wide range of substrates prior to outdoor tiling
- Specifically formulated to be water resistant, ideal for prepping outdoor areas prior to tiling i.e. balconies or roof terraces
- Weber Key-It can be used as a stand-alone primer for cement-based substrates to stabilise friable and chalking surfaces before tiling



## TILE POROSITY

This refers to the rate at which water is absorbed by the tile. Using a polymer-modified adhesive such as Weber Multifix ensures a secure application and bond between the floor surface and porous tile

- Non-vitreous is the most absorbent, more than 7%. Should only be used inside the home where there is no moisture or humidity
- Semi-vitreous is moderately absorbent, 3-7%. Can be used in most areas inside the home
- Vitreous has low absorption, 0.5-3%. Suitable for wet areas and outdoor applications
- Impervious has the lowest absorption, less than 0.5%. Suitable for all applications



## BUILDING MOVEMENT OR HIGH-RISE CONSTRUCTION

- Flats, apartments, high-rise hotels, or commercial buildings, especially when newly built, will experience a fair amount of lateral movement which can have a direct impact on your tiling installation
- Over and above the consideration of expansion joints, a suitable adhesive with flexibility should be considered to secure your floor/wall design

# OUR PRODUCT PORTFOLIO

## ADHESIVES FOR TIME SAVING

### Porcelain Rapid 12

- 12-hour set
- Interior and exterior application
- Can be applied up to 20mm thick
- Anti-slip properties
- Suitable for wall and floor use
- Consistent quality – ISO 9001 and 14001 accredited manufacturer



RAPID SET



ENVIRONMENTALLY FRIENDLY



CERTIFIED



### QuickSet 6

- 6-hour set
- Interior and exterior application
- Suitable for ceramic, porcelain, brick, clay, cement and natural stone tiles
- Easy to mix and apply
- Suitable for wall and floor use
- Consistent quality – ISO 9001 and 14001 accredited manufacturer



RAPID SET



ENVIRONMENTALLY FRIENDLY



CERTIFIED



## ADHESIVES FOR CONVENIENCE

### Renovate

- Suitable for tiling over existing ceramic and porcelain tiles
- Waterproof
- Interior and exterior application
- Can be applied up to 20mm thick
- Adhesive designed to absorb lateral movement
- Suitable for wall and floor use
- Consistent quality – ISO 9001 and 14001 accredited manufacturer



FLEXIBLE



FOR TILES ON TILES



WATER RESISTANT



## ADHESIVES FOR POROUS OR LIGHT-COLOURED TILES

### Multifix

- 24-hour set
- Suitable for ceramic tiles with a lower porosity (hard-body ceramic)
- Interior and exterior application
- Suitable for wall and floor use
- Can be applied up to 20mm thick
- Anti-slip properties
- Easy to mix and apply
- Consistent quality – ISO 9001 and 14001 accredited manufacturer



24 HOUR SET



ENVIRONMENTALLY FRIENDLY



CERTIFIED





# OUR PRODUCT PORTFOLIO

## ADHESIVES FOR POROUS OR LIGHT-COLOURED TILES

### Weber White

- Does not discolour marble and other light-coloured tiles
- 6-hour set
- Interior and exterior application
- Can be applied up to 20mm thick
- Suitable for wall and floor use
- Adhesive designed to absorb some lateral movement
- Consistent quality – ISO 9001 and 14001 accredited manufacturer



EXTRA WHITE



FLEXIBLE



FOR MARBLE

## ADHESIVES FOR EXCESSIVE MOVEMENT

### Ultraflex

- 6-hour set
- Adhesive designed to absorb lateral movement
- Suitable for use with underfloor heating
- Interior and exterior application
- Can be applied up to 20mm thick
- Suitable for wall and floor use
- Suitable for tiling over timber flooring and existing ceramic and porcelain tiles
- Consistent quality – ISO 9001 and 14001 accredited manufacturer



RAPID SET



ELECTRIC FLOOR HEATING COMPATIBLE



FLEXIBLE

## GROUT SOLUTIONS

### All Purpose Grout

- Provides a consistent grout colour and quality
- Suitable for joints from 2mm to 8mm
- Suitable for external/wet area application – replace water in mix with Weber Bond-It [note: grout will dry one shade darker when replacing water with Weber Bond-It]
- Available in a range of colours



EASY TO APPLY



ENVIRONMENTALLY FRIENDLY



DURABILITY

### Epoxy Easy

- Water-based high-strength adhesive and grout, easy to mix and apply
- 3-5mm adhesive bed thickness, joint width 1-10mm
- Waterproof & resistant to chemicals
- Absorbs lateral movement
- Thin bed application allows for a quicker project completion and easier installation
- Easy to apply and clean (just use water)



EASY TO APPLY



WATER RESISTANT



EASY TO CLEAN

# OUR PRODUCT PORTFOLIO

## GROUT SOLUTIONS

### Mosaic Fix

- 12-hour set
- Interior and exterior application
- Can be applied up to 20mm thick
- Anti-slip properties
- Suitable for wall and floor use
- Consistent quality – ISO 9001 and 14001 accredited manufacturer



## FLOORING SOLUTIONS

### General Screed: WB270

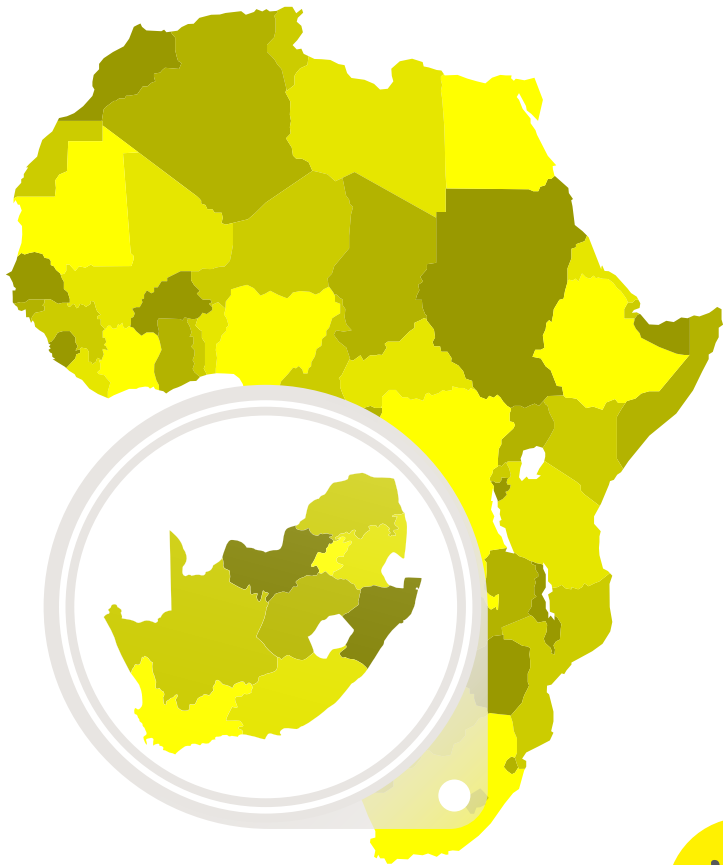
- Residential and commercial grade, this product is specially formulated to provide rapid setting and smooth underlayment suitable for correcting uneven subfloors prior to the installation of floor coverings
- 27Mpa medium load bearing, provides a smooth and hard subfloor ready to receive a range of attractive floor finishes including luxury vinyl, carpets, laminate and parquet flooring



### Perfect For Vinyl: WB300

- Rapid-setting, self-smoothing, thin-topping underlayment developed to receive high-performance flooring finishes in the healthcare and education sector, such as vinyl and carpet tiles and rolls
- 30Mpa high load bearing, polymer-based underlayment developed to meet the high demands of medical equipment and foot and wheel traffic
- Self-drying and low dust emission during grinding, the Weber.Floor 300 delivers state-of-the-art cement technology performance
- Superior flow allows for easy and faster application for fast-track projects





Whilst our main objective is to produce and supply quality building materials relating to tile installations and flooring, additional services include:

- **Specification assistance**
- **On-site support**
- **Training & installation support**
- **Guarantee on specified products**
- **Direct-to-site deliveries channelled through our nationwide stockists**

For more assistance with specifications and product information, contact:

**Martin Pelser**  
**Specifications Manager**  
+27 83 399 7410  
[Martin.pelser@saint-gobain.com](mailto:Martin.pelser@saint-gobain.com)

**SAINT-GOBAIN WEBER**

30 Bosworth Street, Alrode Ext.4 Alberton, South Africa  
Tel: 011 617 8500 | Website: [www.weber-tylon.co.za](http://www.weber-tylon.co.za)

**we  
care**

